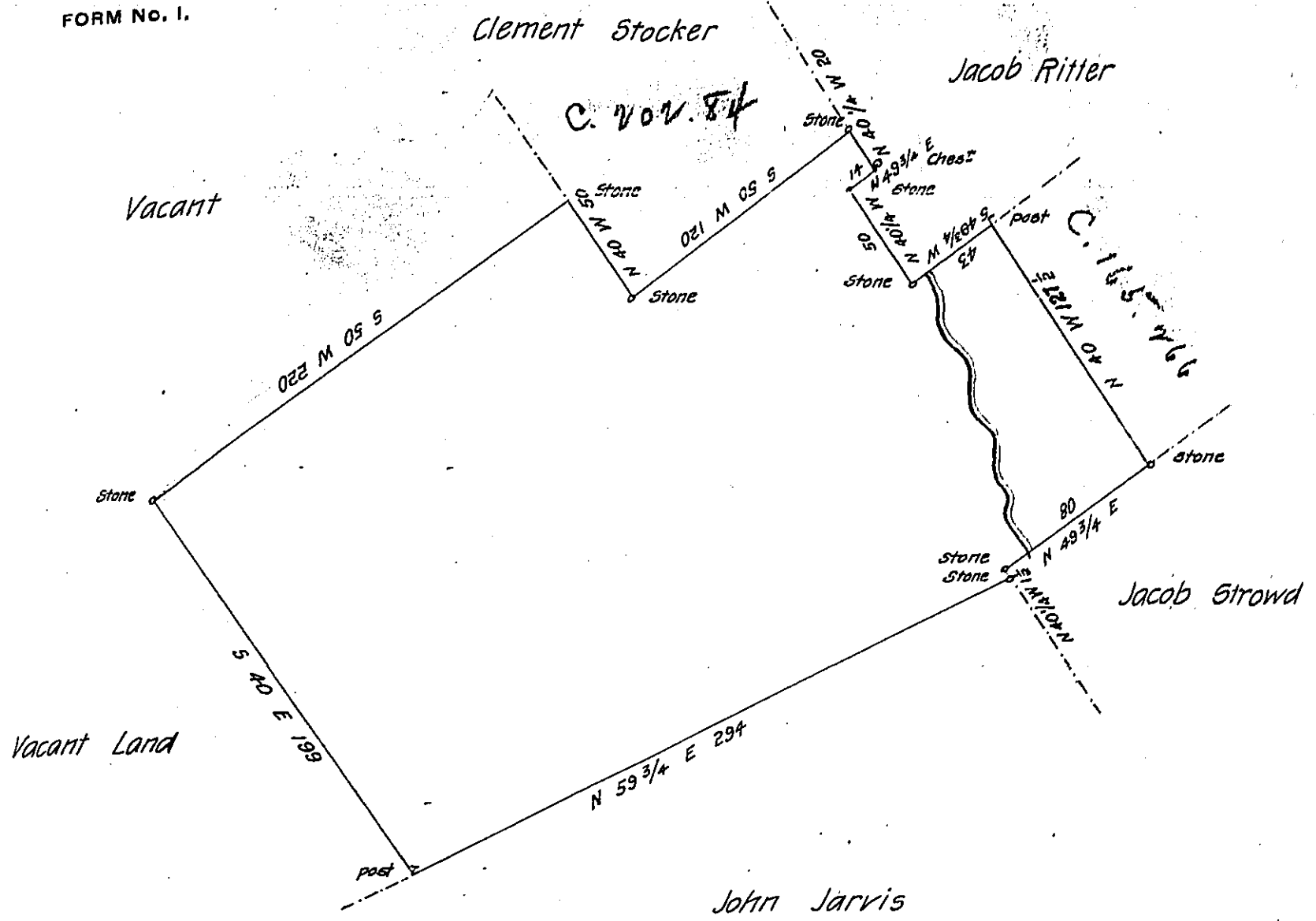


FORM No. 1.



By Virtue of a Warrant dated the 11th February 1793 Surveyed
 the 6-March 1793 to Thomas Ruston the above described tract of land
 Situate on the Waters of Marshall's Creek in lower Smithfield Township
 Northampton County Containing four hundred & thirty eight Acres thirty five
 perches & the allowance of six P. Cent &c^a

P-
 Geo. Palmer D.S.

Daniel Brodhead Esquire
 Surveyor General.

IN TESTIMONY that the above is a copy of the original remaining on file in
 the Department of Internal Affairs of Pennsylvania, made
 conformably to an Act of Assembly approved the 16th day of
 February, 1833, I have hereunto set my Hand and caused
 the Seal of said Department to be affixed at Harrisburg,
 this nineteenth day of October 1906

George P. Brown
 Secretary of Internal Affairs.